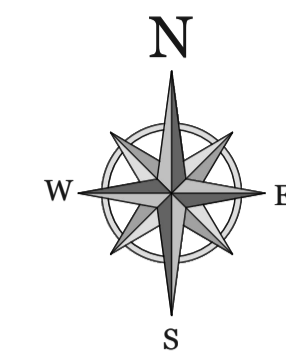
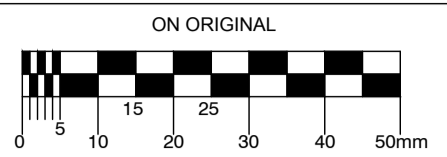
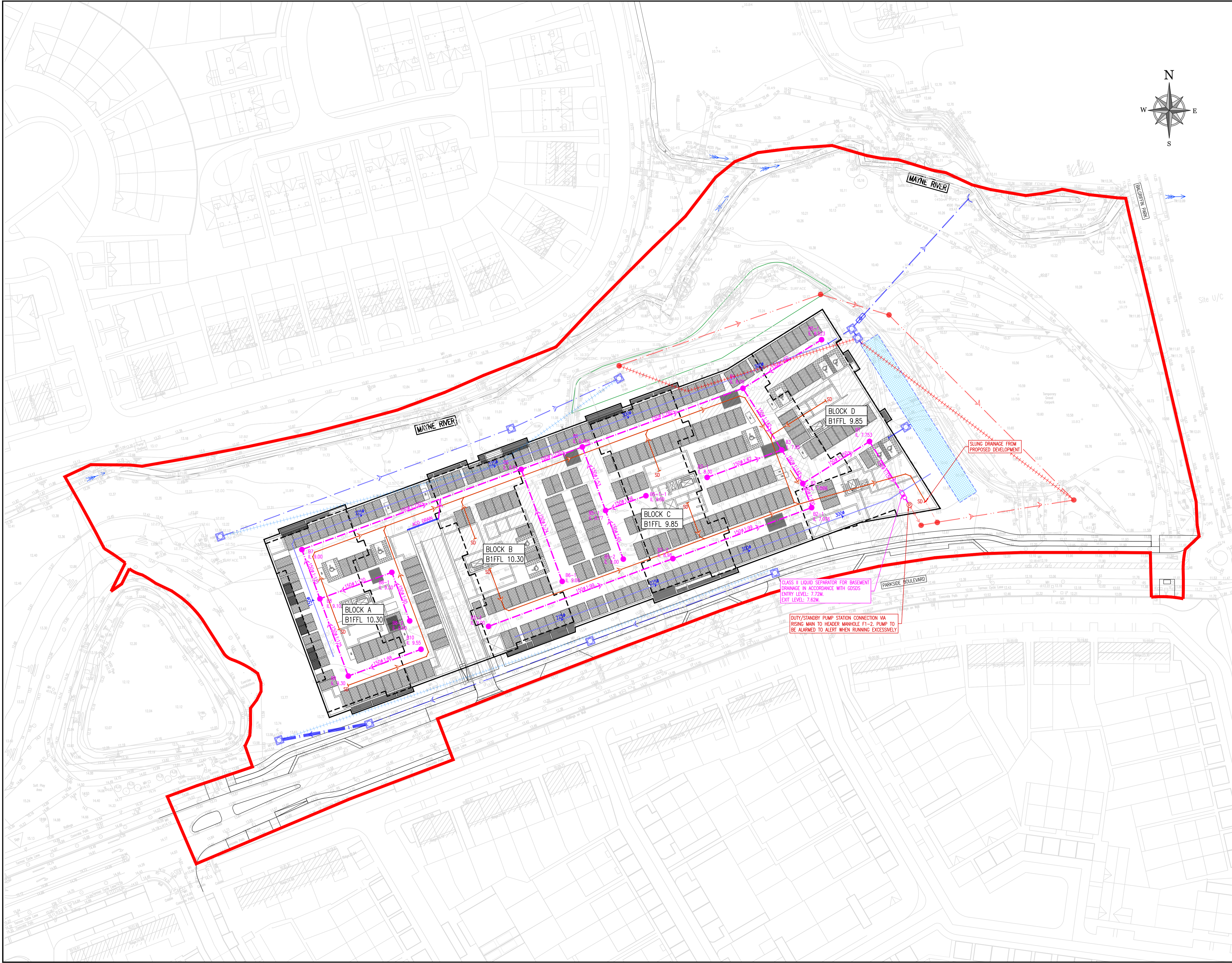


© COPYRIGHT OF THIS DRAWING IS RESERVED BY DBFL CONSULTING ENGINEERS. NO PART SHALL BE REPRODUCED OR TRANSMITTED WITHOUT THEIR WRITTEN PERMISSION.



- GENERAL NOTES:
1. ALL DRAWINGS TO BE CHECKED BY CONTRACTOR ON SITE AND ENGINEER INFORMED OF DISCREPANCIES BEFORE WORK COMMENCES.
 2. THE CONTRACTOR SHALL SATISFY HIMSELF AS TO THE ACCURACY OF EXISTING DRAINAGE LEVELS AND LOCATION OF EXISTING SERVICES ON SITE PRIOR TO COMMENCEMENT OF WORKS ON SITE.
 3. ALL DIMENSIONS AND LEVELS ARE IN METERS AND ARE RELATED TO ORDNANCE DATUM. CO-ORDINATES RELATE TO IRISH NATIONAL GRID.
 4. ALL FOUL SEWERS, MANHOLES AND CONNECTIONS TO BE CONSTRUCTED IN ACCORDANCE WITH IRISH WATER CODE OF PRACTICE FOR WASTEWATER INFRASTRUCTURE AND IRISH WATER WASTEWATER INFRASTRUCTURE STANDARD DETAILS.
 5. ALL FOUL SEWER HOUSE CONNECTIONS TO BE MIN 100mm⁴ UPVC TO IS EN 1401 2009/2012, STIFFNESS CLASS BKN/M2 IN ACCORDANCE WITH IRISH WATER SPECIFICATIONS.
 6. ALL PUBLIC FOUL SEWERS PIPE MATERIAL TO BE IN COMPLIANCE WITH SECTION 3.13 OF IRISH WATER WASTEWATER CODE OF PRACTICE.
 7. ALL PUBLIC SURFACE WATER SEWERS TO BE MINIMUM 225 DIA. CLASS H CONCRETE TO EN1916 & IS 6 2004 IN ACCORDANCE WITH THE GREATER DUBLIN REGIONAL CODE OF PRACTICE FOR DRAINAGE WORKS.
 8. ALL SURFACE WATER CONNECTIONS TO BE MINIMUM 150mm⁴ UPVC TO IS EN 1401 2009/2012 IN ACCORDANCE WITH THE GREATER DUBLIN REGIONAL CODE OF PRACTICE FOR DRAINAGE WORKS.
 9. LOCATION AND INVERT LEVELS OF EXISTING MANHOLES OR OUTFALL POINTS, WHERE APPLICABLE, TO BE VERIFIED BY CONTRACTOR PRIOR TO COMMENCEMENT OF DRAINAGE WORKS.
 10. ALL COVER LEVELS TO MATCH FINISHED ROAD/VERGE/FOOTPATH/CYCLETRACK LEVELS UNLESS OTHERWISE STATED.
 11. CONTRACTOR TO INCLUDE FOR CCTV SURVEY OF ALL SEWERS UPON COMPLETION OF SAME.
 12. ALL FOUL SEWERS TO BE AIR TESTED IN ACCORDANCE WITH IRISH WATER SPECIFICATIONS.
 13. WHERE COVERS ARE LOCATED IN GRASS AREAS, THEY SHALL BE SURROUNDED BY A CONCRETE PLINTH 200MM ALL ROUND AND 100MM DEEP FORMED WITH C20/25 CONCRETE, 20MM AGGREGATE SIZE, BEDDED IN CLAUSE 808 MATERIAL.

- LEGEND
- SITE BOUNDARY
 - - - BUILDING OUTLINE
 - - - PODIUM OUTLINES
 - PROPOSED SURFACE WATER SLING DRAIN
 - PROPOSED FOUL WATER SLING DRAIN
 - PROPOSED RISING MAIN
 - PROPOSED INCIDENTAL DRAINAGE
 - SLOT DRAIN (A/C OR SIMILAR APPROVED)



REV	DATE	DESCRIPTION	BY	CHKD
PLANNING				
DESIGNED	NGC	PREPARED	PJC	
DATE	APR 2019	CHECKED	DJR	

Dublin Office: Ormond House, Upper Ormond Quay, Dublin 7, Ireland. PHONE +353 1 400 4000 FAX +353 1 400 4050

Waterford Office: Unit 2, The Chandlery, 1-2 O'Connell Street, Waterford, Ireland. PHONE +353 51 208 550 FAX +353 51 844 913

DBFL Consulting Engineers email: info@dbfl.ie site: www.dbfl.ie

PROJECT
**PARKSIDE 4,
 PARKSIDE, DUBLIN 13**

DRG. TITLE
BASEMENT DRAINAGE LAYOUT

CLIENT
CAIRN HOMES PROPERTIES LTD.

SCALE 1:500 @A1 FILE REF. 190011-3001
 DRG. NO. 190011-3001